

For your convenience, please feel free to fill in the boxes below with the relevant information. That way should you need any technical assistance on **0871 222 1212** in the future, any information that our technical support team should require will be to hand.

Order Number:	
---------------	--

Stock Code:	
-------------	--

Novatech Motherboard Bundle Build Guide . . .

- **Always remember to backup your data before carrying out any kind of upgrade or maintenance on your PC**
- **Please check that the heat sink is still attached on to the CPU socket securely. It has been known on occasion for one to come loose during transit. To avoid damage to CPU please make sure it has not come loose before powering up**

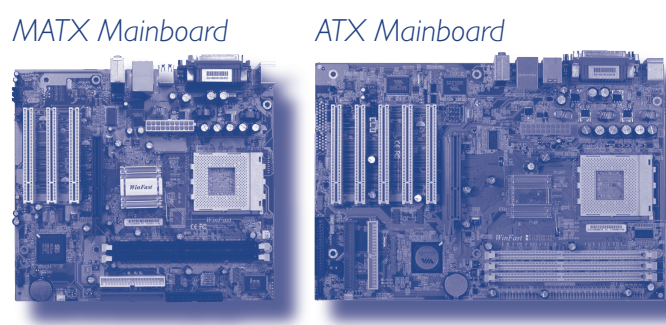
Tools Needed . . .

We recommend at least the following in order to complete the task of fitting your new bundle.

- **Posidrive and Philips head screw drivers** - Most useful, as most fixings in your PC should use these.
- **Cable Ties** - Helps airflow inside the machine by keeping all your cables neat and tidy. Remember to use plastic ties only!
- **Small Wire Cutters** - Handy for cutting off excess of cable ties.
- **Long Nose Pliers** - For when fingers are too big, these will help deal with the smaller parts of PC's such as configuration jumpers.
- **Anti Static Device** - This is a must for anyone building PC's. Static can cause harmful damage to PC components. As you are handling these you must take precautions. The most convenient of these is the Anti Static Strap.
And lastly and most importantly . . .
- **Plenty of Time** - Things never go according to plan and a rushed job has a higher chance of going wrong.

Have I got the right case?

- (1) Depending on which particular bundle you have purchased, you will need a PC case that is either Micro ATX (MATX) or ATX in size. A MATX board can fit in to an ATX case. An ATX board will not fit in a MATX case.



Have I got the right PSU?

- (2) Some cases come with a power supply (PSU) already fitted. If yours does not you will need to buy one. No matter if you're using an old case you already have or buying a new one, your PSU must meet the following requirements.
- (3) Your PSU must meet ATX 12v V1.1 and ATX V2.01 Specification or higher and we recommend 300 watts minimum or higher. New cases bought with PSU will normally already meet this requirement. However a quick and easy way to check is to make sure you have the following connector on your PSU (See Figure A). Some newer motherboards may require additional types of connectors or adaptors. If in doubt, please consult your manual for further information.



4 Pin 12 volt Power Line

Preparing the case

- (4) Before fitting your motherboard bundle in to your case you must prepare the case.

- (5) Firstly you must fit the I/O shield in to the hole in the back of your case (See Figure B).



Figure B

- (6) Some of the holes in the I/O shield may be blocked. They have pieces that can be snapped out. Line up the I/O shield with the various connectors on the top edge of your motherboard. Only break out blocked holes in the I/O shield if your motherboard has a connector that lines up with one of those holes. Once this is done you can fit the I/O shield in to your case. This is normally fitted from the inside of the case and is pressed in to place. Also make sure it is the correct orientation.

Fitting the motherboard

- (7) Next you must fit the metal standoffs that will space the back of the motherboard away from the back of your case.
- (8) There are many different types of standoffs but the most common is shown below. You may need to consult your case information if you are unsure.
- (9) Figure 1 shows the most common standoff. These must be positioned in the case by screwing them in to the preset holes drilled in to the back of your case as shown in Figure 2.

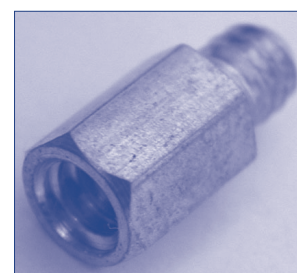


Figure 1

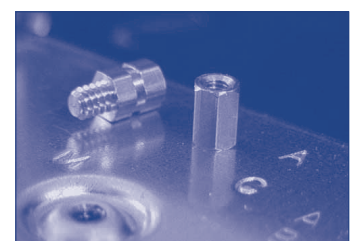


Figure 2

10) In order to work out correctly where these should go. Locate on your motherboard all the screw holes as shown in Figure 3. Use the motherboard as a guide to the correct place for the standoff's to go. If need be put the motherboard in to your case and once you can see remove it again and fit a standoff at each location. Badly positioned standoffs can short and damage your bundle so it is best to double check.

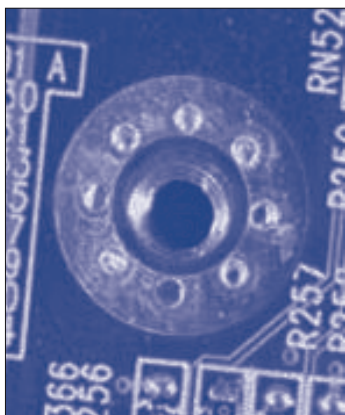


Figure 3

(11) Once this is complete, place your bundle into your case carefully so that the motherboard connectors line up with the holes in the I/O shield. Lift the board slightly so it does not scratch the underside on the standoffs and slide the board so that the connectors pass through there appropriate holes in the I/O shield. If done correctly the screw holes in your motherboard should now line up with the standoffs underneath. Using screws that should have come with your case, screw the motherboard into place.

Connecting the PSU

(12) You can now connect the PSU cables for the motherboard.

(13) You will require one or more of the following (See Figure 4, 5 & 6).



Figure 4



Figure 5

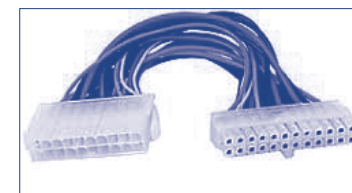


Figure 6

Figure 4 shows main power connector, which all boards need.

Figure 5 shows Aux power connector. Not always required.

Figure 6 shows 20 to 24 pin power connector converter.

(14) Some newer motherboards require a 24pin main power connector.

This will require a 20pin to 24pin convertor for correct connection.

(Please refer to Figure 6)

Finishing up

(15) The last thing to do is to connect the power switch, reset switch, HDD LED and Power LED. These are connected to a 9pin header on the motherboard. An example of how one is wired is shown in Figure 7. This can vary from what is shown below so if in doubt please consult your manual for correct wiring and location on your board.

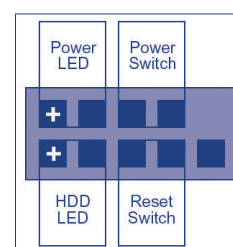


Figure 7

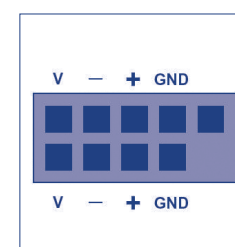


Figure 8

(16) Some cases support front USB. Figure 8 shows the common wiring for motherboard USB pin header. **Please check carefully your specific layout for the USB header, incorrect wiring may damage your motherboard.**

(17) You have now completed Motherboard bundle install. You may add any further hardware you require before installing your system.

FAQ ...

This section will provide answers to some of the more common questions we get asked with regard to motherboard bundles.

Q. What PSU should I use with my bundle?

A. We recommend a minimum of 300 watts. However you should always buy the highest wattage one you can. Its better to over power rather than under power your PC.

Q. What does P.O.S.T. mean?

A. P.O.S.T. stands for 'Power on self test' This is performed by your system every time the system is booted to check that all hardware is in place and detected correctly.

Q. I have upgraded my old PC with a bundle and my operating system will not boot or I get a Blue Screen error.

A. Please make sure that you have performed a complete format and re-install of your operating system. When changing the motherboard you cannot use a previous install from another system.

Q. I have installed Windows but some of my hardware is not working or I have unknown devices listed in device manager.

A. Windows does not contain drivers for all hardware and the drivers it does have are only basic generic drivers. Please install your hardware drivers from the CD's that were provided with the hardware. This will allow the device to work and provide its full functionality.

Q. During the install of Windows my system is halted with a Virus Warning.

A. This is because your system BIOS believes a virus may be on your system. This is a false alarm caused by the fact that Windows is writing new MBR and FAT information to your HDD. Please make sure Virus warning is disabled in your BIOS should this error arise.

Q. I have built my system but it will not power on / P.O.S.T.

A. Please check that all your hardware is fitted correctly. Try reseating the hardware such as Cards, RAM and CPU. Make sure that you have not shorted the motherboard out by fitting metal standoff's in wrong position. Make sure you have fitted all cables needed and that they are the correct orientation. Consult documentation if in doubt.

Q. I am using a SATA hard drive and windows reports that it is not detected during install.

A. This is normally caused by the fact windows install does not have an inbuilt driver for your SATA controller. If needed you will normally have a floppy disk with this driver on. At the beginning of Windows install it asks you to press F6 to install additional drivers. Press F6 at that time. Windows install will continue for a few moments and then ask you for the additional drives. Follow on screen instructions at that time. You should then be able to install windows.

Q. Should I update my BIOS / If it fails will it invalidate my warranty.

A. You should only update your BIOS if the new BIOS will fix a problem. If your system is working fine there is no need to upgrade. An incorrect BIOS flash will damage the board and will invalidate your warranty. Please only perform this if advised to do so by our Technical Support. All Bundles are shipped with the most up to date BIOS available.

Q. I already own a copy of Windows XP that I have used and activated on a previous system. Can I use it with my new system?

A. Due to licensing limitations with regard to Window XP this may not be possible. Certain upgrades of a previously used version of Windows XP will breach the user licence agreement and in this circumstance a new copy of XP would need to be purchased.

Distributor Address:-

novatech Ltd.
Harbour House, Hamilton Road,
Cosham, Portsmouth,
Hants PO6 4PU

Tel: 0871 222 1212
www.novatech.co.uk